



# CENTRE FOR PRE-UNIVERSITY



DK193(P)

**PENANG**  
INTERNATIONAL  
Dental College

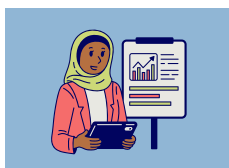
[www.pidc.edu.my](http://www.pidc.edu.my)

**Welcome to the Centre for Pre-University.** At the Centre for Pre-University, we assert that a strong foundation is the initial step toward fulfilling your academic and professional ambitions. Your pursuit of becoming a doctor, dentist, chemist, engineer, or entrepreneur begins here. Our programs are meticulously crafted to prepare students for undergraduate studies by providing vital academic information, practical skills, and the appropriate mindset for success in higher education. We emphasise the cultivation of critical thinking, communication, and problem-solving skills essential in today's competitive and dynamic environment. Our committed lecturers offer direction through interactive, student-centred educational experiences. Our curriculum, aligned with international requirements and supplemented by industry-relevant exposure, equips students with the confidence and preparedness necessary for their academic advancement. The Centre for Pre-University provides a connection to several undergraduate programmes available through PIDC, MAHSA University, and partner institutions. We are dedicated to cultivating well-rounded individuals prepared for future challenges in science, technology, healthcare, and business. We encourage you to embark on this significant initial step alongside us. Allow us to assist you in establishing the groundwork for your future success.

## ABOUT PENANG INTERNATIONAL DENTAL COLLEGE, BUTTERWORTH

Penang International Dental College (PIDC), established in 2006, has been one of the pioneers in private dental education, having trained over 937 dental surgeons. PIDC, a prestigious dental institution, offers a unique Doctor of Dental Surgery (DDS) programme that provides students with an ideal balance of theoretical knowledge and extensive clinical practice. The DDS programme is structured to deliver a comprehensive education, with the first two years focused on pre-clinical studies at MAHSA University's Saujana Putra Campus, followed by three years of intensive clinical training at the PIDC Campus in Butterworth, Penang. This arrangement enables students to achieve both academic excellence and practical experience in a real-world dental setting. At PIDC, we take pride in being a comprehensive dental institution equipped with a state-of-the-art dental centre. Currently, PIDC is expanding and besides Dentistry, PIDC is also offering Foundation in Science (FIS) and Foundation in Arts (FIA) programme. The two programmes are a 1-Year programme which are offered at our PIDC Butterworth Campus in Penang, focused to deliver a holistic education, comprising of both theoretical and practical. Upon completion, students may progress to any relevant degree programmes at our associate member university, MAHSA University or Penang International Dental College for our DDS programme.

## WHY STUDY FOUNDATION AT PIDC?



**Excellent Academic Staff**



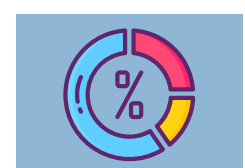
**Competency-Based Training**



**1-Year Programme to Degree**



**Fully-equipped Facilities**



**Good Student-to-Lecturer Ratio**

# PROGRAMME STRUCTURE

# FOUNDATION IN SCIENCE

(N/0011/3/0008) (MQA/FA15858) (08/27)



## DURATION

12 MONTHS (3 SEMESTERS)

12 MONTHS

## SEMESTER 1

- English I
- Thinking Skills
- Biology I
- Physics I
- Basic ICT

## SEMESTER 2

- Chemistry I
- Mathematics I
- Biology II\*
- Introduction to Psychology \*
- Physics II \*\*
- Introduction to Programming \*\*

## SEMESTER 3

- Chemistry II
- Mathematics II
- English II
- Co-Curriculum
- Biochemistry \*
- Engineering Mathematics \*\*

SCAN HERE



\*Life Sciences (Dentistry, Medicine, Pharmacy etc.)

\*\* Physical Sciences (Engineering, Computing etc.)

## ENTRY REQUIREMENT

\*Entry requirements are subject to changes.

- Pass SPM/O-Level with a minimum of 5 credits, including Mathematics and 2 other science subjects with a pass in Bahasa Melayu and English or its equivalent; or
- Pass UEC with a minimum Grade of B in Mathematics and 2 other science subjects with a pass in Bahasa Melayu and English or its equivalent; or
- Any other equivalent qualification acceptable by MQA/MOHE or relevant professional bodies.

### To further studies in Dentistry, Medicine, and Pharmacy, student must have:

- Pass SPM/O-Level with a minimum of 5Bs each in Biology, Chemistry, Physics and Mathematics (or Additional Mathematics) and another subject; with credit in Bahasa Melayu and English or its equivalent; or
- Pass UEC with a minimum of Grade B in 3 subjects, including Biology, Chemistry, Physics or Mathematics or Advanced Mathematics; or
- Any other equivalent qualification acceptable by MQA/MOHE or relevant professional bodies.

## EDUCATION PATHWAY

- SPM /O-Level/ UEC  
Homeschooling or Equivalent

- PIDC Foundation in Science (1 year)  
@ Butterworth Campus

- Doctor of Dental Surgery (PIDC DDS-5 years)\* Year 1 & 2 : Saujana Putra Campus, MAHSA University
- Year 3, 4 & 5 : PIDC, Butterworth Campus, Penang or other relevant programmes with affiliate colleges / universities.

## WHY STUDY FIS AT PIDC?

- Experienced and qualified lecturers

- Career development and networking opportunities with supportive and inclusive environment

- FIS is awarded by PIDC a reputed higher education institution in Malaysia

- Pre-integration opportunities into dentistry lifestyle & privileged pathway to dentistry at PIDC

# PROGRAMME STRUCTURE

# FOUNDATION IN ARTS

(N/0011/3/0172)(MQA/PA17614)(10/29)



12 MONTHS

## DURATION

12 MONTHS (3 SEMESTERS)

## BUSINESS

### SEMESTER 1

- English I
- Thinking Skills
- Basic ICT
- Essential of Economics
- Introduction to Management

### SEMESTER 2

- Mathematics
- Introduction to Law
- Management Accounting
- Writing & Research Skills / Introduction to Visual Arts / Introduction to Finance (Choose 1 course)

### SEMESTER 3

- English II
- Co-Curriculum
- Financial Accounting
- Introduction to Marketing
- Introduction to Psychology / Introduction to Mass Media and Communication / Introduction to Legal Skills (Choose 1 course)

## HUMANITIES

### SEMESTER 1

- English I
- Thinking Skills
- Basic ICT
- Essential of Economics
- Introduction to Management

### SEMESTER 2

- Mathematics
- Introduction to Law
- Writing & Research Skills
- Introduction to Finance / Introduction to Visual Arts (Choose 1 course)

### SEMESTER 3

- English II
- Co-Curriculum
- Introduction to Psychology
- Introduction to Sociology
- Introduction to Mass Media and Communication or Introduction to Legal Skills (Choose 1 course)

SCAN HERE



## ENTRY REQUIREMENT

\*Entry requirements are subject to changes.

### REQUIREMENTS

**SPM / O-LEVEL OR EQUIVALENT :** Pass with 5 credits in any subjects

## EDUCATION PATHWAY

- SPM/O-Level/ UEC Homeschooling or Equivalent

- PIDC Foundation in Arts (1 year) @ Butterworth Campus

**Bachelor's degree programs upon completing Foundation in Arts:**

- Communication
- Media Studies
- Arts
- Education
- Law
- Creative Arts

## WHY STUDY FIA AT PIDC?

- Practical learning, presentations & critical thinking development

- Strong foundation for business, psychology, communication & management degrees

- Supportive campus environment with student activities & networking opportunities

- Attractive progression opportunities into MAHSA's recognised degrees

## PIDC ALUMNI



### **Prem A/L Murugaiah**

*Foundation in Science*

My decision to join in the Foundation in Science program marked a major turning point in my academic life. My experience was really changed by the lecturers' encouragement and enthusiasm, as well as by the inclusive and cooperative learning environment. I initially discovered Chemistry to be slightly difficult, but with constant help, tailored advice, and additional tutorials provided, I progressively grew confident and much improved. Along with improved academic performance, this improvement restored my self-confidence.

### **Farah Shahirah**

*Foundation in Science*

One of the turning points in my academic career was enrolling in the Foundation in Science program. The systematic approach to learning and the friendly, informed professors produced an environment in which I felt driven and supported. Particularly, mathematics turned into a topic I actually started to find interesting. It was greatly appreciated that the lecturers consistently prioritised critical thinking and provided ample opportunity for queries. Their help not only sharpened my abilities but also revealed a real passion in that subject.



### **Neha Manoj**

*Foundation in Science*

When I think back on my journey, I am very grateful for it. Pursuing the Foundation in Science was one of the best decisions I've ever made. The guidance and encouragement of the committed instructors at MAHSA University and PIDC College had a significant impact on both my academic and personal growth. I'm grateful for the opportunities I was given, the challenges that pushed me to develop, and the friendships that made the experience more enjoyable.

# FACILITIES



Simulation Lab



Polyclinics



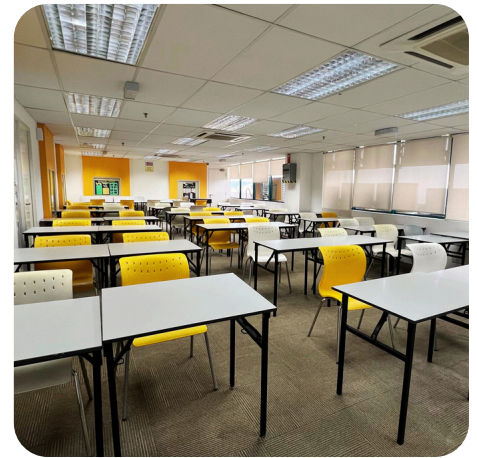
Multidisciplinary Lab



Library



Lecture Hall



Reading Room



Student Lounge



Student Reception Area



Classroom

# ACTIVITIES



# WHY STUDY IN PENANG ?



Reputable Education & Healthcare Hub



Affordable Student Living



Safe, Student-Friendly City



Cultural & Heritage Learning Experience



Balanced Lifestyle: Study, Nature & City Life



Excellent Food Culture



Convenient Connectivity



Vibrant Student Community & Activities

## CONTACT DETAILS

### MARKETING & PROMOTIONS CENTRE



+6012 203 8638/ +6012 938 7432/  
+6012 322 7432/ +6012 334 7432/  
+6012 998 7432 / +6012 742 7432



admission@pidc.edu.my



www.pidc.edu.my



Penang International Dental College  
Level 18, NB Tower, Jalan Bagan Luar,  
12000 Butterworth, Penang, Malaysia.

### ACADEMIC PARTNER



Follow us on:



PIDCOFFICIAL

*\*PIDC reserves the right to modify or cancel any statement/schedule in the prospectus/promotional materials and accepts no responsibility for any consequences of such modifications or cancellation.*